

Solar and Plug in Lion Head Water Feature

SL232

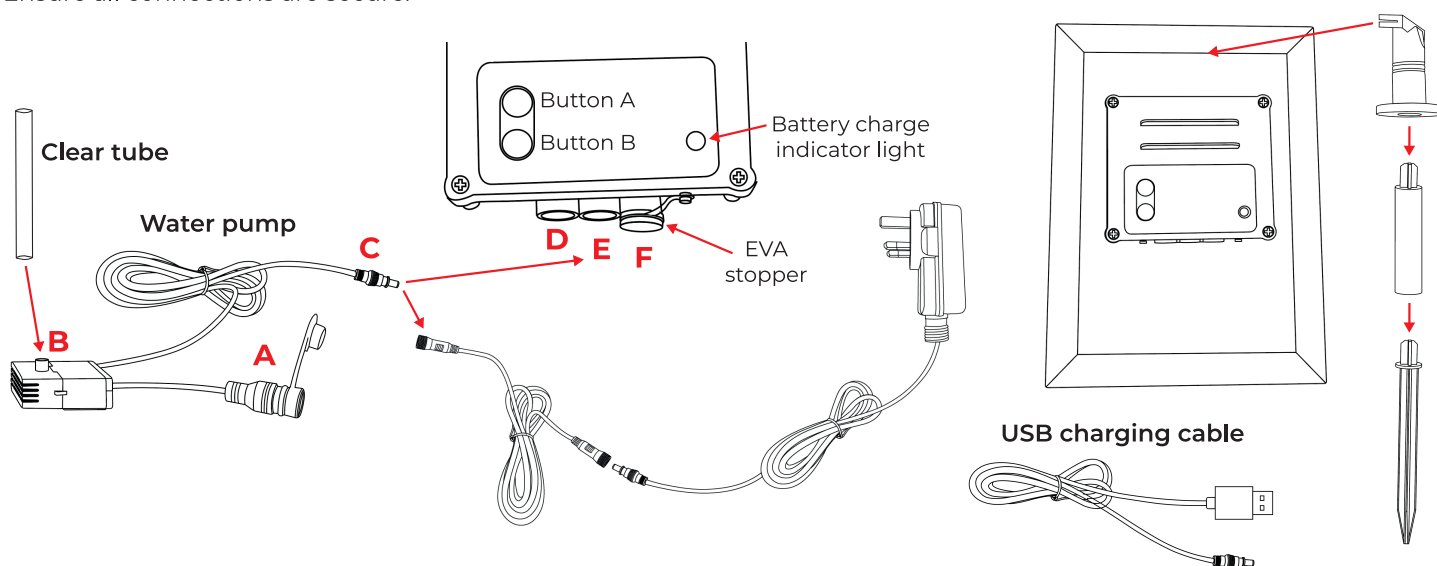
Festive
Lights™



These instructions contain important information required when using this product for the first time. Please read all the following information carefully before use and retain for future reference.

Assembling your product.

- Carefully remove all components from the packaging.
- Fill the fountain with clean water.
- Using the Water pump.
 - 3.1 Connect port **A** to the light port (black cable) on the inside of the water fountain.
 - 3.2 Connect the clear plastic tube found on the inside of the water fountain to the water pump **B**.
 - 3.3 Pick your power source.
 - Plug in:** Connect port **C** to the plug.
 - Solar panel:** Connect port **C** into the middle port in the back of the solar panel, port **E**.
- Place the pump into the reservoir ensuring that it is fully submerged under the water.
- Ensure all connections are secure.



Power option instructions.

Plug - Always plug into a suitable weatherproof socket or indoors, to ensure a safe connection. The plug comes with a 5m lead cable. To turn the product on and off you will need to plug in/unplug the item or turn it on/off using the socket switch.

Solar -

Solar panel ports: Use port **D** for the USB charging cable. Use port **E** to connect the solar panel to the pump. Port **F** is not applicable for this power source, ensure the EVA stopper is covering this port at all times.

Turning the product on/off: Press and hold **button A** on the back of the solar panel for 3 seconds to turn on, press and hold again for 3 seconds to turn off. When turned on, the pump will then operate until the battery is flat.

Charging the solar panel: There are multiple ways to charge the battery. The first is to ensure that the solar panel is placed under direct sunlight. If extra charge is required, simply switch off the pump, allowing the solar panel to charge without using any energy. The second is to disconnect the panel from the pump and use the USB cable (provided) to plug into a mains power source. When charging the panel with the USB cable, **the indicator light on the back of the panel will show red/orange/green as per the level of battery power**, see below for battery status information.

Battery status.

Red: The battery needs charging. The pump has less than 2 hours run time.

Orange: The battery is operating at half charge. The pump has 6-8 hours run time.

Green: The battery is fully charged. The pump has 8 hours run time.

Please note: The indicator light will blink whilst charging and will show static green when fully charged.

Using timer mode.

Press **button B**

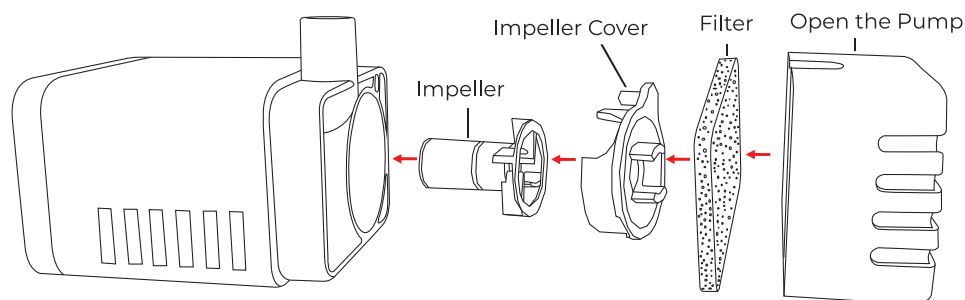
- Once to set the 2-hour timer, the light will flash once indicating the 2-hour timer is set (2 hours on/22 hours off).
- Twice to set the 4-hour timer, the light will flash twice indicating the 4-hour timer is set (4 hours on/20 hours off).
- Three times to set the 8-hour timer, the light will flash three times indicating the 8-hour timer is set (8 hours on/16 hours off).
- Press four times to turn the timer off.

Please note: If the timer is set to run for 8 hours and the battery depletes after 6, the timer will continue to countdown from the 8-hour mark originally set. If the battery is then recharged between 6-8 hours, the pump will continue to work. If it is not recharged, the pump will stop working and wait 24 hours to start the timer again, if the battery has been charged.

Cleaning and Maintenance.

Solar panel: The panel should be cleaned regularly with a soft, damp cloth only. Do not use chemical, solvent, or abrasive cleaning materials. Regular cleaning of the panel is advised to maintain optimum performance.

Pump: After prolonged use, the pump may deplete in power and eventually stop working. To clean, remove the pump and impeller cover, checking for a buildup of sediment, scale, or dirt in the filter. Clean with a damp cloth and avoid any harsh chemicals.



Troubleshooting guide.

1. If the product stops working.

- Check the solar panel is in direct sunlight and is able to charge sufficiently.
- Check all the connections to the solar panel are secure.
- Check that the pump is not blocked. If this looks to be the case, carefully dismantle the pump. Remove the cover, impeller cover/ impeller and use a small soft brush or run under a tap to remove any debris.

2. The pump operates but no water is running through the fountain.

- Check for a buildup of debris in the tubes/filter and clean thoroughly.

Warning & Caution.

- For decorative purposes only.
- Do not connect to a mains supply whilst the product is inside the packaging.
- Keep out of reach of children and animals.
- Keep away from sources of heat.
- Check regularly for signs of wear and tear, discontinue use immediately if damaged. Individual LED bulbs cannot be replaced.
- Do not allow the pump to run dry.
- Suitable for indoor and outdoor use.
- When using outdoors, connect the plug only to an indoor socket or in a suitable weatherproof enclosure.
- Do not connect the transformer plug to any other product than the one it is intended for.
- For technical advice consult Festive Lights Ltd.

Storage.

To help maintain the life of the battery, charge the solar panel before storing. After storage, please allow for 1-2 days of charging in direct sunlight before use or use the USB charger cable to recharge the solar panel.

Technical Data.

Plug wattage:	6W
Plug Operation Voltage:	6V
Solar Panel wattage:	2W
Solar Pump Operation:	5V DC
Solar Pump wattage:	0.54W
Water Flow Max.:	200LPH
Water lift Max.:	80cm
Cable Length:	5m
Lithium Battery:	3.7V-2000mAh
Pump Waterproof Rate:	IP68
Panel Waterproof Rate:	IP44

This product comes with a 12 month manufacturer's warranty against failure to all parts. If you have a warranty claim, please use the contact details below. For any technical information relating to this product, please email Festive Lights Ltd on contact@festive-lights.com. We aim to respond within 2 working days. Alternatively, please contact our help line on +44 (0)1257 792111. This service is available between 9.00am-5.00pm Monday to Friday.

Made in China



UK importer: Festive Lights Ltd, Preston Road, Charnock Richard, Chorley, Lancashire, PR7 5HH
EU importer: Festive Lights BV, Kieftsbeklaan 1, 7607 TA Almelo, Netherlands